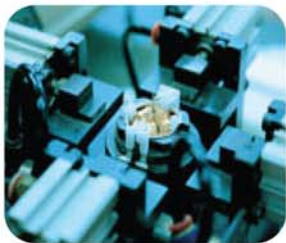




MOTION CONTROL SOLUTIONS



Revere Electric is a Leader in Motion Control Solutions

- Motion Control Products
- AC Drives
- AC Motors
- Robotics
- Ancillary Accessories
- Motor Repair Services

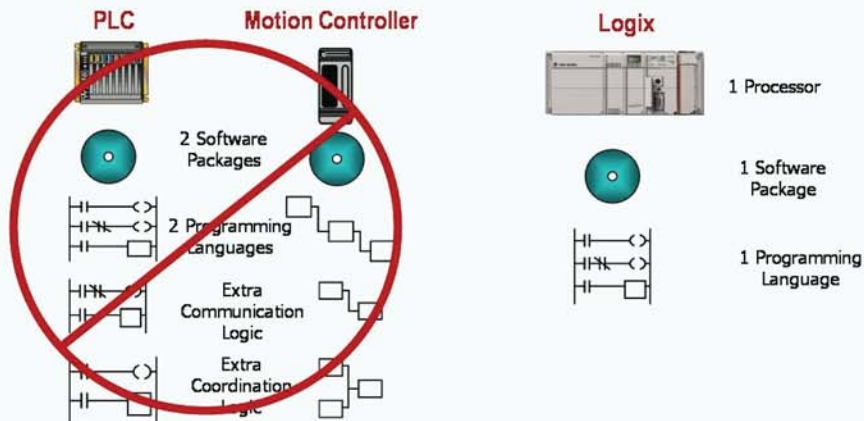
Differentiating Ourselves from Other Distributors

- Over 150 Years Experience in Motion Control Solutions on Staff
- Exclusive Rockwell Automation Franchise Since 1935
- All Encompassing Solutions; from Stand Alone Single Axis to Complex Multi-Axis Solutions
- Large Breadth and Depth of Product Offerings from Controller Through Drive; Including Mechanical Systems
- Pre and Post Technical Support

Electric Motors & Repair

- EASA Certified Motor Shop
- Specially Trained Technical Support
- Specialize in:
 1. Motors Ranging from 1,000 HP and Weighing 20,000 Pounds
 2. State of the Art Electric Motor Rewind Capabilities
 3. On-Site Diagnostic Services
 4. Overhead Crane/Hoist Repair and Inspection
 5. Certified Pump Repair
 6. Motor Repair, Rewind and Modification Services
 7. New Motor Sales

The Rockwell Automation Integrated Architecture Solution



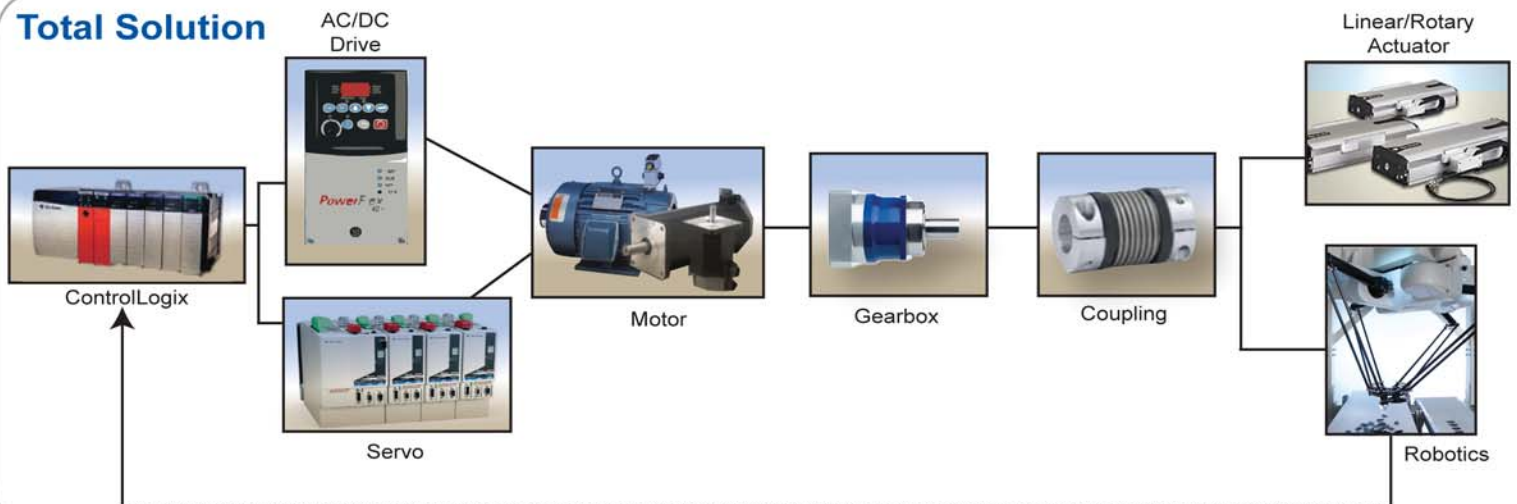
Servo Solutions Include:

- Single Axis Stand Alone Motion
- Multi-Axis Coordinated and Non-Coordinated
- Solid Works Partner
- Linear Motor, Belt and Screw Actuators

Control the Application with Variable Speed Control

- Stand Alone Drives
- Packaged Drives
- Packaged HVAC Drives
- Medium Voltage Drives

Total Solution



Deploying Robotics for Application Needs

Benefits

- Increased Productivity
- Reduce Cost
- Labor Reduction
- Flexibility
- High Degree of Accuracy and Repeatability
- Lowered TCO
- Improved ROI

Products

- Python Cartesian
- Cobra
- Vipor Six Axis
- Quattro



Adept Technology, Inc. is a global, leading provider of intelligent vision-guided robotics systems and services.



Python



Cobra



Vipor



Quattro

The Right Solution Begins and Ends with Revere!

- Automation Consulting
- Application Engineering
- Specification Design/Review
- Servo Sizing
- Ratio Design/Optimization Analysis
- Tolerance Design Analysis
- Efficiency Analysis
- Simulation Design Analysis
- Automation Audits
- Inside Technical Support
- On-Site Technical Support
- Customer Training

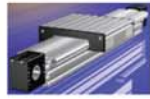


Integrated Components & Accessories

Linear Technology



Ball Screws



Belt Actuators



Linear Motors



Rod Actuators



Rack and Pinion

Rotary Technology



In Line Planetary



Right Angle



Helical Offset



Gear Motor



Direct Drive

Couplings



Servo Class



Schmidt Style



Disc Style



Shaft to Hub



Torque Limiter

Miscellaneous



Hi Speed PLS



Stepper Control



Stepper Drives



Integrated Stepper
Motor Drive



Encoders



Cables



Gantry Solutions



Custom Solutions



Framing & Guarding



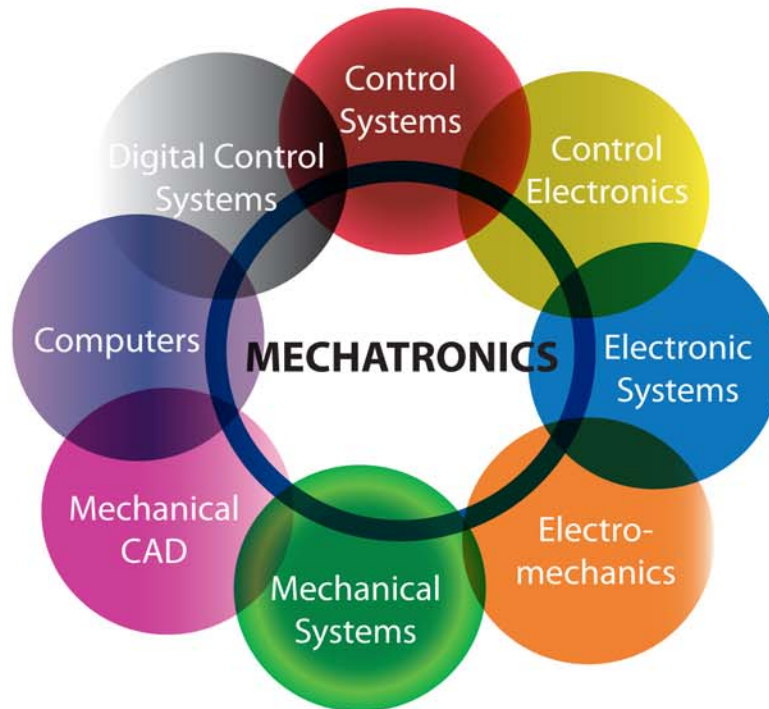
Reactors/Filters



Braking Resistors

Mechatronic Design

A collaborative venture between mechanical, electrical and control design engineers.



HOLT ELECTRIC
1515 Walnut Ridge Drive
Hartland, WI 53029
(262) 369-7100

www.holtelectric.com



REVERE ELECTRIC SUPPLY
2501 West Washington Boulevard
Chicago, IL 60612
(312) 738-3636

Buffalo Grove Office
975 Weiland Road
Buffalo Grove, IL 60089
(847) 499-6000

www.revereelectric.com



COMPLETE INDUSTRIAL SUPPLY
1220 Wenzel Road
Peru, IL 61354
(815) 224-1510

Motor Shop
3349 Becker Drive
Peru, IL 61354
(815) 224-1511

Morris Office
539 W. Bedford Drive
Morris, IL 60450
(815) 942-8178

www.completeindustrial.com